

# Isolator<sup>®</sup> Multifunctional Pen



*Pace. Sense.  
Stimulate. Ablate.*

**AtriCure**

## PACE

### OBJECTIVE

Confirm exit block of focal stimuli from the atrial cuff to the atrium.

### Pre-ablation

Using the multifunctional pen, establish atrial capture by placing the pen at various atrial cuff locations—superior, bifurcation, inferior (lateral to the proposed ablation line) documenting those that elicit a corresponding atrial pacing rate change.

### Post-ablation

Place the pen at all previously identified atrial cuff locations to confirm that they no longer provoke a corresponding atrial rate change.



## SENSE

### OBJECTIVE

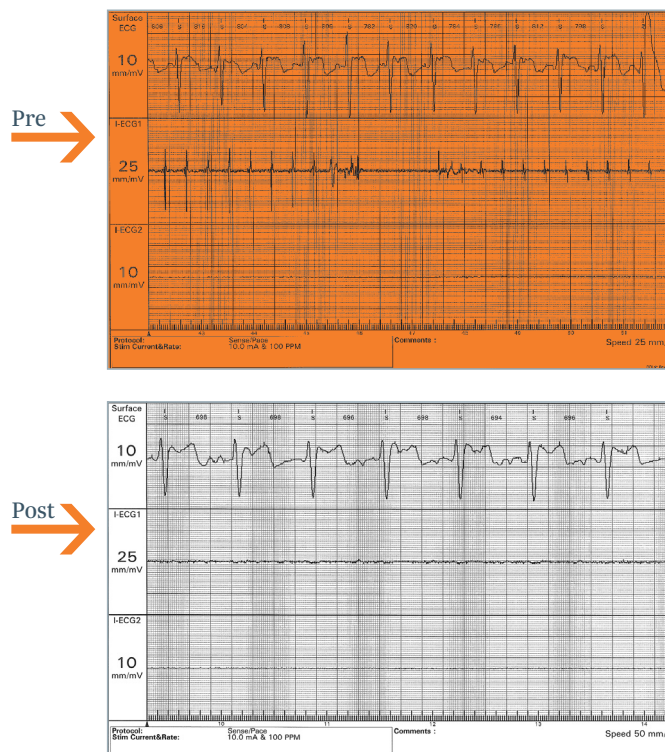
Confirm entrance block of atrial cuff potentials through evaluation of baseline waveforms.

### Pre-ablation

Using the multifunctional pen, identify and record baseline ECG potentials along the left and right atrial cuff.

### Post-ablation

Reposition pen at previously identified baseline locations to confirm absence of potentials or slow potentials disassociated from left atrial activity.



## STIM

### OBJECTIVE

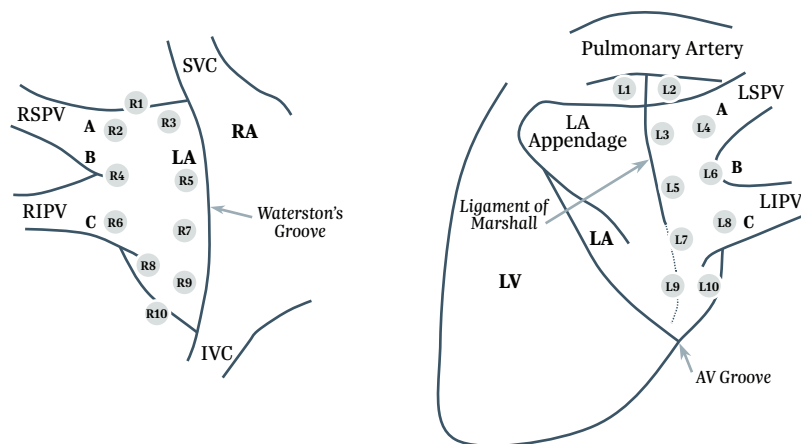
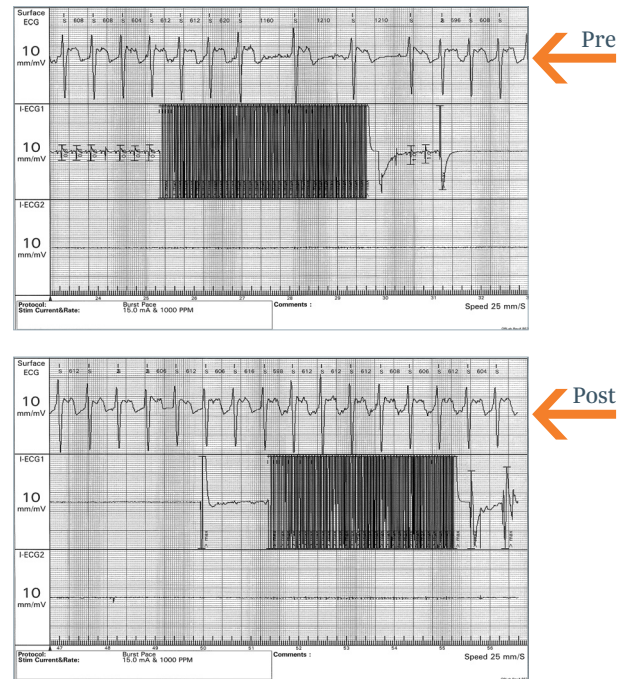
Confirm inactivity of parasympathetic responses associated with intrinsic cardiac nervous system utilizing high frequency stimulation (HFS).

### Pre-ablation

Using the multifunctional pen, stimulate various locations on the atrial epicardial surface noting those sites that elicit a vagal response (significantly slowing intrinsic heart rate).

### Post-ablation

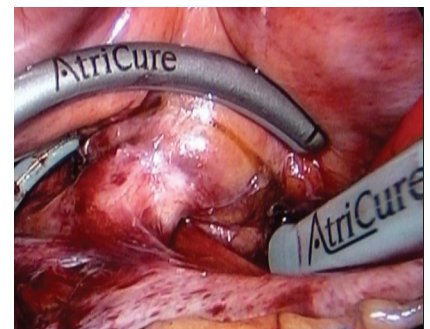
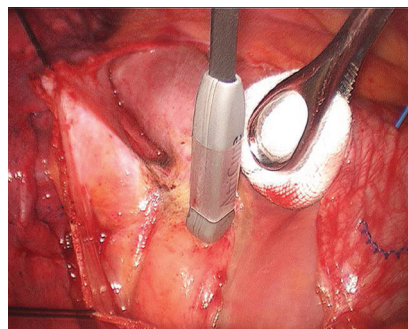
Return the pen to previously identified sites to confirm that HFS no longer initiates a vagal response.



## ABLATE

### OBJECTIVE

Create precise cardiac lesions with bipolar RF energy. Use the multifunctional pen or Isolator Synergy™ clamp to help achieve desired outcomes.



AtriCure Isolator Bipolar Linear Pens	
Device	Product Code
Isolator Multifunctional Pen, 19 cm	MAX1
Isolator Long Pen TT	MAX5

This material is intended to provide general information, including opinions and recommendations, contained herein for educational purposes only. Such information is not intended to be a substitute for professional medical advice, diagnosis or treatment. The material is not intended to direct clinical care in any specific circumstance. The judgment regarding a particular clinical procedure or treatment plan must be made by a qualified physician in light of the clinical data presented by the patient and the diagnostic and treatment options available.

**U.S. Indications:** The AtriCure Synergy Ablation System is intended to ablate cardiac tissue for the treatment of persistent atrial fibrillation (sustained beyond seven days, or lasting less than seven days but necessitating pharmacologic or electrical cardioversion) or longstanding persistent atrial fibrillation (continuous atrial fibrillation of greater than one year duration) in patients who are undergoing open concomitant coronary artery bypass grafting and/or valve replacement or repair.

Please review the Instructions for Use for a complete listing of contraindications, warnings, precautions and potential adverse events prior to using these devices.

**Rx Only.**

#### ATRICURE, INC.

7555 Innovation Way

Mason, OH 45040 USA

+1 (513) 755-4100

+1 (866) 349-2342

CustomerService@AtriCure.com

[www.AtriCure.com](http://www.AtriCure.com)

PM-US-0157E-0327-G

**AtriCure**