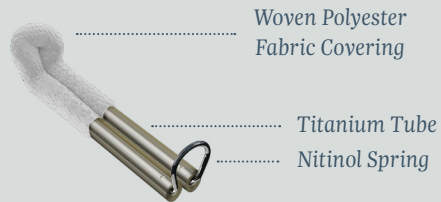


ATRICLIP FLEX FEATURES*



LAYERS OF THE ATRICLIP



*The AtriClip FLEX image shows the device with the shaft in a bent position. This device comes packaged in a straight position.

References

1. Salzberg, S.P., et al. (2008). Surgical left atrial appendage occlusion: evaluation of a novel device with magnetic resonance imaging. *Eur J Cardiothorac Surg*, 34:766–70.
2. Salzberg S, et al. (2010). Left atrial appendage clip occlusion: early clinical results. *J Thorac Cardiovasc Surg*, 139(5):1269–74.
3. Fumoto H, et al. (2008). A novel device for left atrial appendage exclusion: the third-generation atrial exclusion device. *J Thorac Cardiovasc Surg*, 136(4):1019–27.
4. Kamohara K, et al. (2005). A novel device for left atrial appendage exclusion. *J Thoracic Cardiovasc Surg*, 130(6):1639–44.
5. Ailawadi G, et al. (2011). Exclusion of the left atrial appendage with a novel device: early results of a multicenter trial. *J Thorac Cardiovasc Surg*, 142(5):1002–9.

U.S. Indications: The AtriClip LAA Exclusion System is indicated for the occlusion of the heart's left atrial appendage, under direct visualization and in conjunction with other cardiac surgical procedures.

Direct visualization, in this context, requires that the surgeon is able to see the heart directly, with or without assistance from a camera, endoscope, etc., or any other viewing technology.

Please review the Instructions for Use for a complete listing of contraindications, warnings, precautions and potential adverse events prior to using these devices.

Rx Only.

ATRICURE, INC.

7555 Innovation Way
Mason, OH 45040 USA
+1 (513) 755-4100
+1 (888) 347-6403
CustomerService@AtriCure.com
www.AtriCure.com

PM-US-0110B-0623-G

AtriClip® FLEX

A More Flexible Solution for the Most Widely Placed LAA Exclusion Device in the World



AtriCure

AtriCure

Why Use the AtriClip Left Atrial Appendage Exclusion System by AtriCure?

1 / LAA ISOLATION

In preclinical and clinical studies, the AtriClip device securely sealed the LAA orifice resulting in a smooth endothelial tissue surface within 90 days.^{1,2,3}

2 / NON-PIERCING

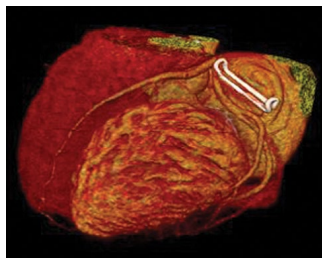
Non-piercing application occludes the LAA. Woven polyester fabric covering promotes tissue ingrowth and promotes complete encapsulation in 90 days from implant, without erosion of adjacent structures.^{1,4}

3 / EXCLUDE – SAFETY

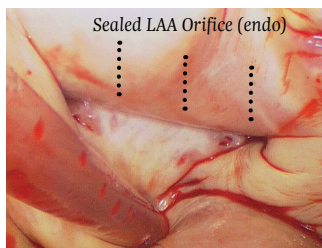
The AtriClip device provides safe and atraumatic exclusion of the LAA during open cardiac surgery.⁵

4 / CUSTOM FIT TO SPECIFIC ANATOMY

AtriClip devices are custom fitted to the LAA anatomy and are available in four sizes, including 35 mm, 40 mm, 45 mm and 50 mm.⁵

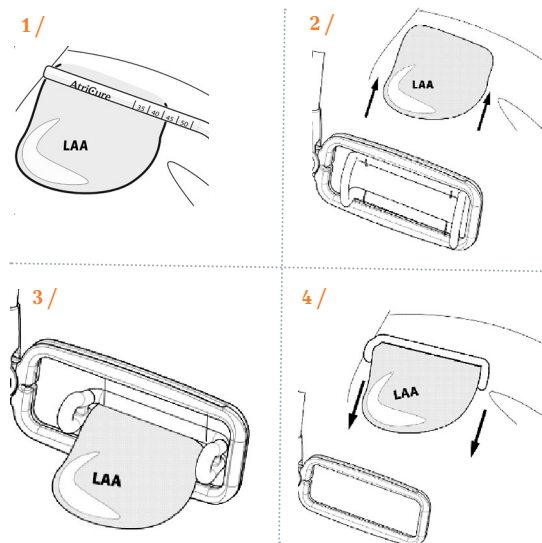


CT confirmation scan at three months



Endocardial View after implantation

MEASURING THE LAA AND PLACING THE CLIP



AtriClip Gillinov-Cosgrove® LAA Exclusion System Devices



Flex

35 mm AtriClip ACH 235 45 mm AtriClip ACH 245

40 mm AtriClip ACH 240 50 mm AtriClip ACH 250



Standard

35 mm AtriClip ACH 135 45 mm AtriClip ACH 145

40 mm AtriClip ACH 140 50 mm AtriClip ACH 150



Pro

35 mm AtriClip PRO 135 45 mm AtriClip PRO 145

40 mm AtriClip PRO 140 50 mm AtriClip PRO 150



Long

35 mm AtriClip LAA035 45 mm AtriClip LAA045

40 mm AtriClip LAA040 50 mm AtriClip LAA050