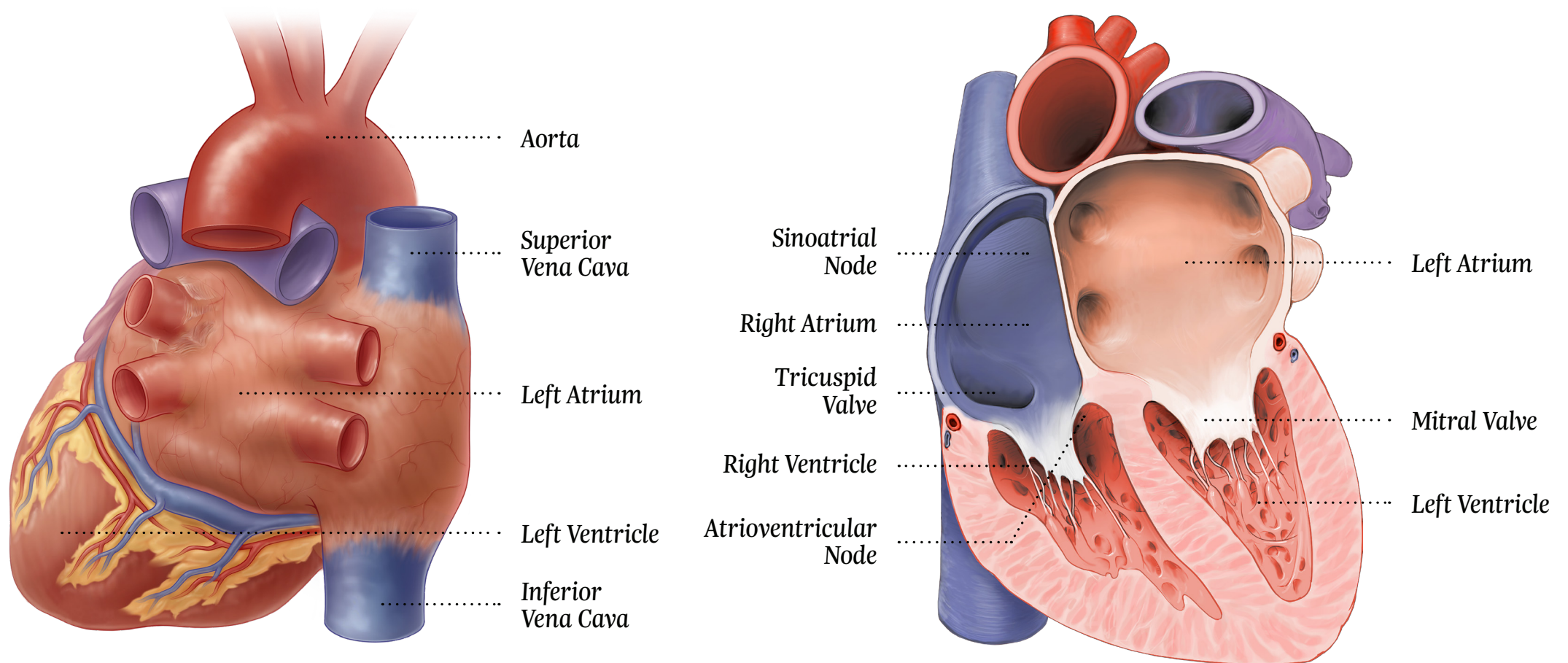


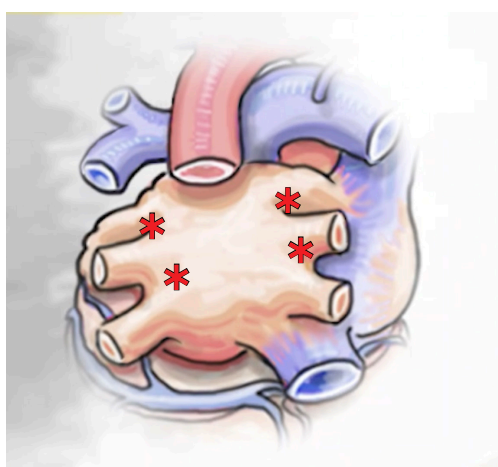
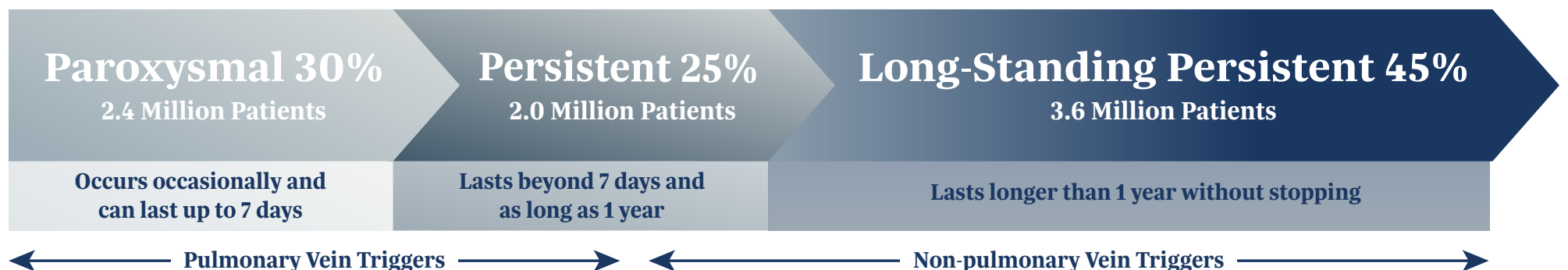
# Hybrid AF™ Therapy

Understanding the Hybrid AF Procedure

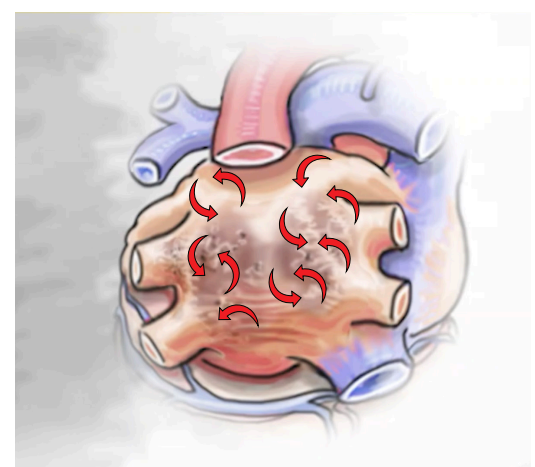
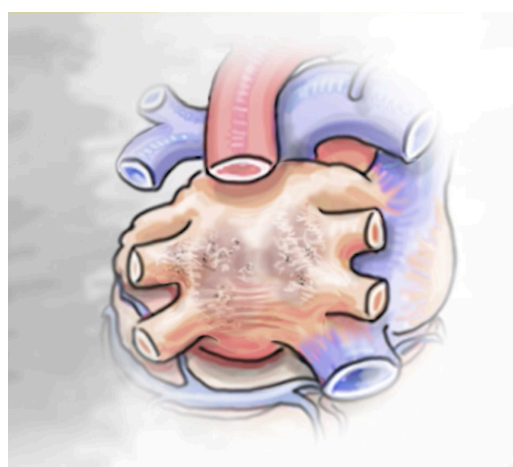


## Atrial Fibrillation is a Progressive Disease

Long-standing Persistent Afib is the largest Afib patient population<sup>1</sup>



Pulmonary veins (red) are common sites for initiating Afib



Non-pulmonary vein triggers (red arrows) can also initiate and sustain Afib, in patients with advanced forms of Afib

**If Afib is not properly treated, the disease can worsen.**

<sup>1</sup>Percentages reflect the percentage of diagnosed AF patients in each disease stage in the AF Progression  
<sup>1</sup>Rahman, E, et al. (2014). Global epidemiology of atrial fibrillation. Nature Reviews Cardiology, 11:639-654.  
 Pulmonary vein images courtesy of: Calkins H, et al. Heart Rhythm 2012. 9:632.e21-696.e21.